

Rugged, Keyboard Field Controller



- 55 Key Alphanumeric Keyboard with Joystick
- Windows CE® 6.0 Operating System
- 5.17 Megapixel Camera and Bar Code Reader
- 256MB RAM, 2GB Flash Memory
- Built-in Wireless *Bluetooth*® and WiFi Connectivity
- Rugged and Waterproof

FC-2600 Rugged, Keyboard Field Controller

A full-featured keyboard, ruggedized, handheld field controller packed with memory and built-in 5.17 megapixel camera.

Robotic System Controller

The FC-2600 ruggedized and waterproof full keyboard interface makes for a great robotic rover controller. The large keys snap as you type so you know you have made a correct data entry. Even with gloved hands, the large keyboard is easy to operate. *Bluetooth*® connect to a robotic system for wireless control.

GPS System Controller

The RTK rover pole is well balanced with this full-sized controller and visible LCD display. Direct sunlight makes the screen more visible outdoors. The FC-2600 is an ideal controller for RTK rover systems.

Live Video with WT-100

The FC-2600 has built-in WiFi communication that connects to the Topcon Imaging Station (IS) system. The connection can be made directly to the IS, or through the extended range WT-100. The combination of the IS, WT-100, and FC-2600 make for a productive Live Video display robotic system.

Removable, Hot Swappable Battery Packs

With two NiMH batteries loaded standard with 2500mAh each, battery performance can be as high as 42 hours. The typical power drain from a *Bluetooth*® connection to a GPS receiver will run for 24 hours. Don't ever worry about overcharging, the FC-2600 has internal temperature monitors to prevent any unexpected high temperature issues.



55 Key Alphanumeric Keypad

- Fast data entry
- Gloved-hand operation
- Tactile click when storing a point
- Alpha, numeric and special characters



Windows® CE 6.0

- Fast program operation
- Efficient memory management
- Fast power-on
- Long battery life operation



5.17 Megapixel Camera

- Take photo notes
- Barcode scanning
- Illumination available
- Auto and manual focus



Long Battery Life

- Dual batteries
- 42 hour operation
- Hot-swappable
- Common Topcon battery



The exclusive LongLink™ functionality in Topcon instruments provides lightweight, long range communication capabilities never before offered in a manual total station. With a 1,000+ ft. (300+m) wireless communication range, you can now operate the data collector from the "smart-spot" of the crew, the prism pole. Also referred to as the two-man, economical robot solution, Topcon's new LongLink™ technology brings a whole new level of flexibility to your manual field crew.



PRIMARY FEATURES



Built Rugged and Waterproof

The FC-2600 was designed with rugged field applications in mind. The enclosure is completely waterproof and the device can be submersed in water and stay protected. The battery door, communication ports, and power plug are all waterproof. Do not fear harsh environmental conditions with the FC-2600.



KIT COMPONENTS

Complete System Components

- FC-2600
- Hand Strap and Carrying bag
- Stylus and screen protectors
- Two batteries
- Charger
- USB download cable
- USB Flash drive adapter



SPECIFICATIONS

Computer

Microprocessor	XScale PXA 270
Processor Speed	624 MHz
Operating System	CE.NET 6.0
Memory	256MB SDRAM 2GB System Flash

Display

Display Resolution	320 x 240 QVGA
Type	3.52" TFT Color LCD
Light	LED Backlight
Touch Panel	Amorphous Silicon Active Matrix AD-TFT Color Display
Screen Dimensions	2.89" x 2.19"
Keyboard	55 Keys (Power Key Included)
Interface	RS-232C (D-Sub 9pin), Mini USB 2.0 A/B, USB OTG Host and Client

Bluetooth®	Bluetooth 1.2 Class II
Wireless	802.11b/g
Camera	5.17 megapixel with autofocus, shutter, aperture and illumination

Environmental

Water/Dust Resistance	IP67
Operating Temperature	-4°F to +122°F (-20°C to +50°C)
Storage Temperature	-4°F to +140°F (-20°C to +60°C)
Shock Resistance	4 ft. all faces, per MIL-STD 810F Method 516.5IV
Operating Time	Up to 42 hours
Batteries	Dual, Hot-swappable, Li-ion Rechargeable, Smart battery
Dimensions	10.85" x 5.34" x 2.19"
Weight	2.3 lbs. with dual batteries
RoHS Compliant	Yes

For more specification information:
topconpositioning.com/fc-2600



7400 National Drive • Livermore • CA 94550
(925) 245-8300

Specifications subject to change without notice. ©2012 Topcon Corporation
All rights reserved. P/N: 7010-2094 Rev. A Printed in U.S.A. 8/12

The Bluetooth® word mark and logos are registered trademarks owned by
Bluetooth SIG, Inc. and any use of such marks by Topcon is under license. Other
trademarks and trade names are those of their respective owners.

SOFTWARE

MAGNET™

A family of software solutions that streamlines the workflow for
surveyors, contractors, engineers and mapping professionals.

Field

Modern User Interface

MAGNET Field provides a bright, graphical user
interface with large touch icons, and bright
readable text. The screens not only look good,
but provide fast workflows.



Easy to Use

The icon and text field interface has been
optimized to provide both text and images to
indicate what data is needed on each screen.
Shortcut buttons and fast access tabs provide
a very productive interface.



Advanced Calculations

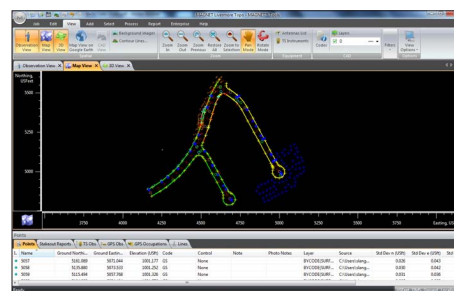
MAGNET Field not only controls the
measurements of the instrument but
also provides many COGO and
adjustment calculations.



Office Tools

MAGNET Office Tools

Directly integrates into Autodesk®
products utilizing their CAD
engine, or as a standalone
installation with Topcon's CAD
engine. Either way, connect to
MAGNET Enterprise directly
from your CAD software.



Your local Authorized Topcon dealer is: